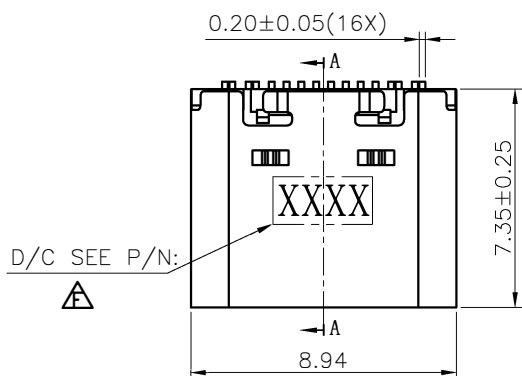
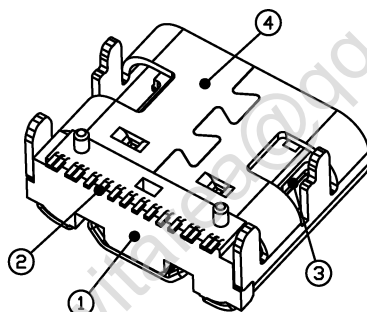


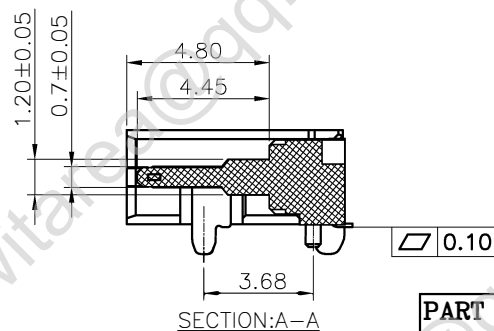
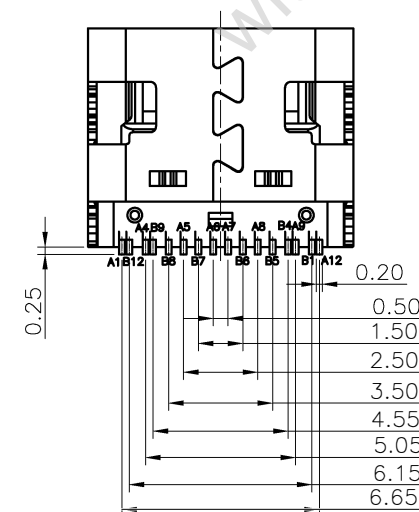
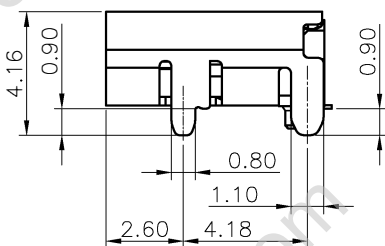
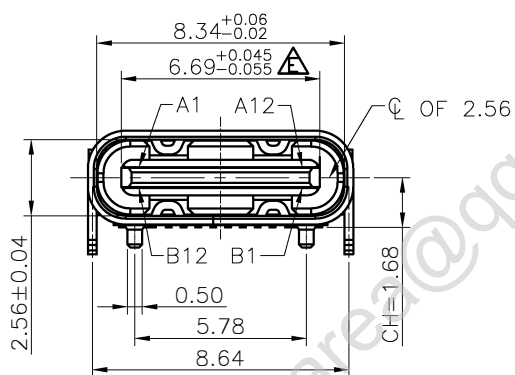
| REV | ECN No.    | DATE       | REMARK       |
|-----|------------|------------|--------------|
| E   | ECN1908006 | 2019.08.22 | 增加6.69协会尺寸公差 |
| F   | ECN1912017 | 2019.12.16 | 外壳增加D/C规格    |
| G   | ECN2009002 | 2020.09.08 | 增加PA9T料规格    |

NOTE: (备注)

- MATERIAL SPECIFICATION: (材料规格)**
  - HOUSING-HIGH TEMPERATURE RESISTANT PLASTIC,UL94 V-0. (塑胶: 耐高温塑料 UL94 V-0.)
  - CONTACTS:COPPER ALLOY (接触: 铜合金)
  - MID PLATE: STAINLESS STEEL (中夹片: 不锈钢)
  - FRONT SHELL: STAINLESS STEEL (前壳: 不锈钢)
- PLATING SPECIFICATION: (电镀规格)**
  - CONTACTS: (接触)
    - Ni 50u" MIN. UNDER PLATED OVER ALL. (镀底50u" 最小)
    - Au PLATED ON THE FUNCTIONAL AREA OF CONTACT. (接触功能区镀金)
    - (GOLD PLATING THICKNESS FOLLOW THE P/N) (镀金厚度随料号)
  - FRONT SHELL: (前壳)
    - Ni 30u" MIN. UNDER PLATED OVER ALL. (镀镍30u" 最小)
  - SHIELD PLATE&EMI PLATE: (防护电镀 & EMI电镀)
    - CLEAR ONLY (只清洁)
- MECHANICAL PERFORMANCE: (机械性能)**
  - INSERTION FORCE: 0.5~2.0kgf. (插入力: 0.5~2.0kgf)
  - EXTRACTION FORCE: 0.8kgf~2.0kgf(拔出力: 0.8kgf~2.0kgf)
  - DURABILITY: 10000 CYCLES. (耐久10000次)
- ELECTRICAL PERFORMANCE: (电气性能)**
  - CURRENT RATING:5.0A (额定电流: 5.0A)  
VOLTAGE RATING:5.0V (额定电压: 5.0V)
  - LLCR: (接触电阻)
    - VBUS & GND PINS AND OTHER PINS: 40mΩ/PIN MAX. (电源PI N 接地PI N和其它PI N最大)
    - SHIELD: 50mΩ/MAX. (防护50mΩ/PI N最大)
    - LLCR MAX. CHANGE OF ALL PINS: 10mΩ. (接触电阻最大变化在10mΩ/PI N内)
  - INSULATION RESISTANCE: 100MΩ MIN (绝缘阻抗: 100MΩ 最小)
  - DIELECTRIC WITHSTAND VOLTAGE,AC 100V FOR 1 MINUTE. (耐电压: AC 100V 1分钟)
- ENVIRONMENTAL PERFORMANCE: (环境性能)**
  - OPERATING TEMPERATURE: -25°C~+85°C. (工作温度-25°C~+85°C)
  - IR REFLOW: (IR 回流焊)
    - THE PEAK TEMPERATURE ON THE BOARD SHALL BE MAINTAINED FOR 10 SECONDS AT 260°C. (在260摄氏度的时候保持10秒)



D/C SEE P/N:

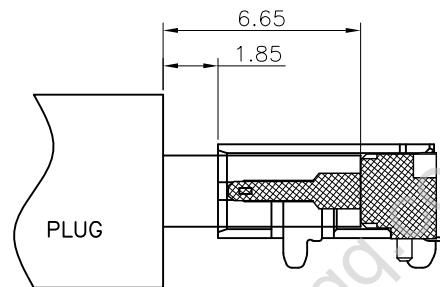


|   |   |                       |   |  |   |   |
|---|---|-----------------------|---|--|---|---|
| <b>PART NO.:</b><br>SEE THE PART NUMBER CODE<br><br><b>QUALITY SYMBOL</b><br> | <b>GENERAL TOLERANCES (UNLESS SPECIFIED)</b><br>X.XXXXX ± ---<br>X.XXX ± 0.10<br>X.XX ± 0.25<br>X.X ± 0.30<br>ANGULAR ± --° |                       | 深圳市纬域科技有限公司<br>SHENZHEN WITAREA TECHNOLOGY CO., LTD<br><br><b>TITLE</b><br>USB CF 16PIN (L=7.35)WITH POST一体式成型<br><br><b>DWG.NO.</b><br>W0026-16-TM1-S1<br><br><b>DESIGN UNITS</b><br>METRIC<br><br><b>SCALE</b><br>1:1 |  | <b>DRAWN BY</b><br>SAM<br><br><b>CHECKED BY</b><br>JAY<br><br><b>APPROVED BY</b><br>JACKY | <b>DATE</b><br>2020.09.08<br><br><b>DATE</b><br>2020.09.08<br><br><b>DATE</b><br>2020.09.08 |
|   | <b>SHHEET NO.</b><br>1 OF 3<br><br><b>THIRD ANGLE PROJECTION</b><br>  | <b>frame size: A4</b> |   |  |   |   |

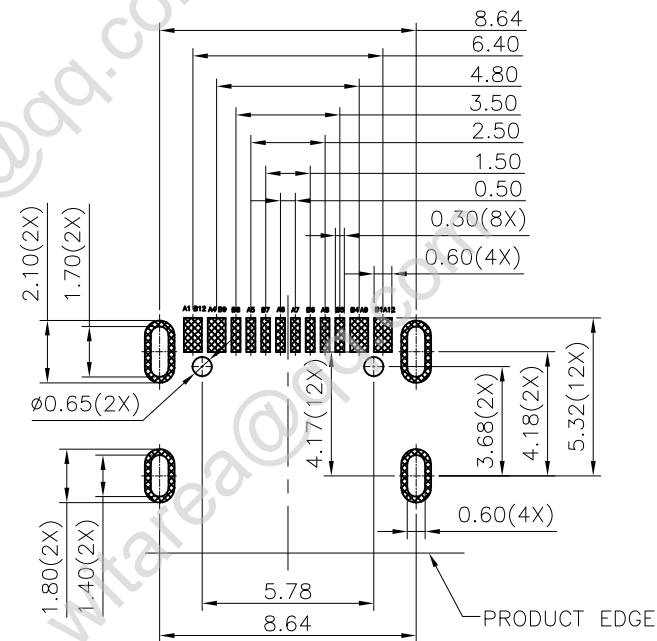
RoHS Compliant

THIS DRAWING CONTAINS INFORMATION THAT IS PROPRIETARY TO WITAREA TECHNOLOGY, AND SHOULD NOT BE USED WITHOUT WRITTEN PERMISSION

| REV | ECN No.    | DATE       | REMARK       |
|-----|------------|------------|--------------|
| E   | ECN1908006 | 2019.08.22 | 增加6.69协会尺寸公差 |
| F   | ECN1912017 | 2019.12.16 | 外壳增加D/C规格    |
| G   | ECN2009002 | 2020.09.08 | 增加PA9T料规格    |



AFTER MATING



RECOMMENDED PCB LAYOUT(TOP VIEW)  
THICKNESS 0.80MM;DEFAULT TOLERANCE:±0.05

USB TYPE-C PIN ASSIGNMENTS

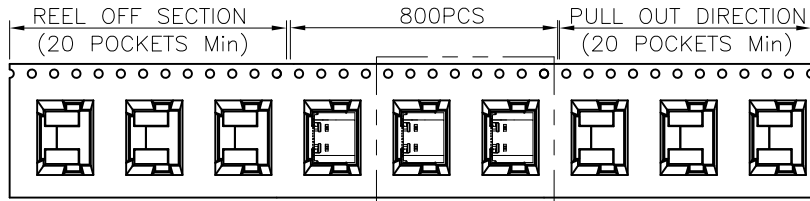
| PIN NUMBER | SIGNAL NAME | PIN NUMBER | SIGNAL NAME |
|------------|-------------|------------|-------------|
| A1         | GND         | B12        | GND         |
| A4         | VBUS        | B9         | VBUS        |
| A5         | CC1         | B8         | SBU2        |
| A6         | Dp1         | B7         | Dn2         |
| A7         | Dn1         | B6         | Dp2         |
| A8         | SBU1        | B5         | CC2         |
| A9         | VBUS        | B4         | VBUS        |
| A12        | GND         | B1         | GND         |

|                                   |   |   |                               |                          |                           |      |        |     |        |         |       |                                   |                            |                             |                           |
|-----------------------------------|---|---|-------------------------------|--------------------------|---------------------------|------|--------|-----|--------|---------|-------|-----------------------------------|----------------------------|-----------------------------|---------------------------|
| QUALITY SYMBOL<br>                | <b>PART NO.:</b><br>SEE THE PART NUMBER CODE  | 深圳市纬域科技有限公司<br>SHENZHEN WITAREA TECHNOLOGY CO., LTD |                               | <b>DRAWN BY</b><br>SAM   | <b>DATE</b><br>2020.09.08 |      |        |     |        |         |       |                                   |                            |                             |                           |
|                                   | <b>GENERAL TOLERANCES (UNLESS SPECIFIED)</b>  | <b>TITLE</b><br>USB CF 16PIN (L=7.35)WITH POST一体成型  |                               | <b>CHECKED BY</b><br>JAY | <b>DATE</b><br>2020.09.08 |      |        |     |        |         |       |                                   |                            |                             |                           |
|                                   | <table border="1"> <tr> <td>x.xxxx</td> <td>± ---</td> </tr> <tr> <td>x.xxx</td> <td>± 0.10</td> </tr> <tr> <td>x.xx</td> <td>± 0.25</td> </tr> <tr> <td>x.x</td> <td>± 0.30</td> </tr> <tr> <td>ANGULAR</td> <td>± --°</td> </tr> </table> | x.xxxx  | ± ---                         | x.xxx                    | ± 0.10                    | x.xx | ± 0.25 | x.x | ± 0.30 | ANGULAR | ± --° | <b>DWG.NO.</b><br>W0026-16-TM1-S1 | <b>SHEET NO.</b><br>2 OF 3 | <b>APPROVED BY</b><br>JACKY | <b>DATE</b><br>2020.09.08 |
|                                   | x.xxxx  | ± ---   |                               |                          |                           |      |        |     |        |         |       |                                   |                            |                             |                           |
| x.xxx                             | ± 0.10  |   |                               |                          |                           |      |        |     |        |         |       |                                   |                            |                             |                           |
| x.xx                              | ± 0.25  |   |                               |                          |                           |      |        |     |        |         |       |                                   |                            |                             |                           |
| x.x                               | ± 0.30  |   |                               |                          |                           |      |        |     |        |         |       |                                   |                            |                             |                           |
| ANGULAR                           | ± --°   |   |                               |                          |                           |      |        |     |        |         |       |                                   |                            |                             |                           |
| <b>DIMENSION STYLE</b><br>MM ONLY | <b>DESIGN UNITS</b><br>METRIC   | <b>SCALE</b><br>1:1                                 | <b>THIRD ANGLE PROJECTION</b> |                          |                           |      |        |     |        |         |       |                                   |                            |                             |                           |

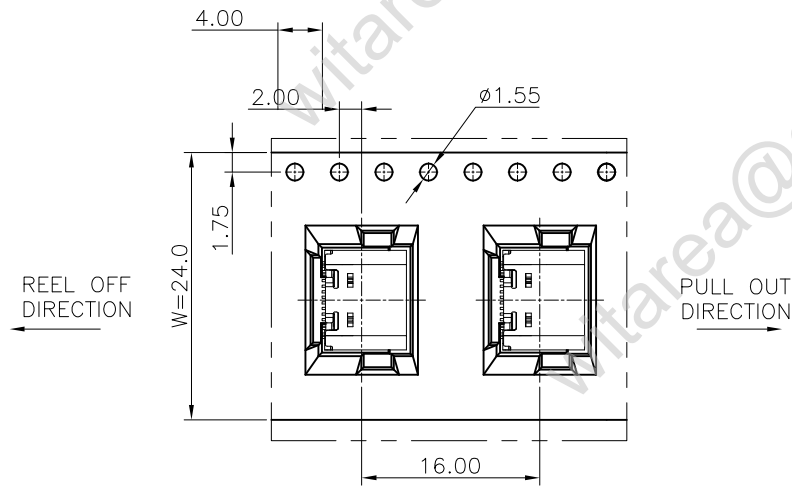
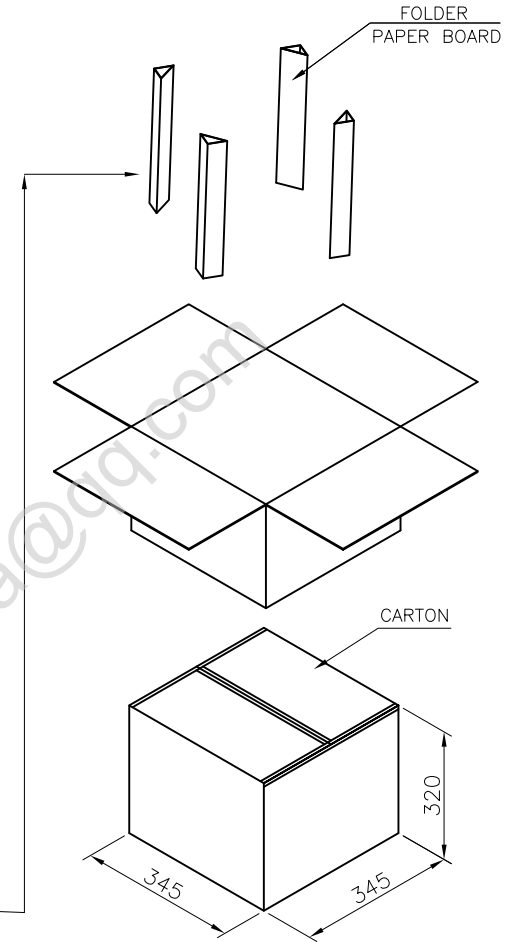
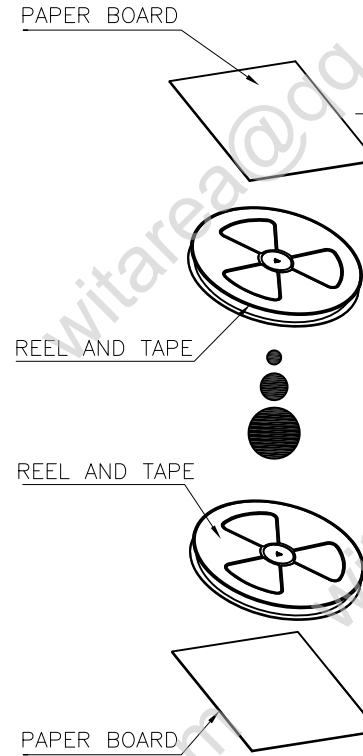
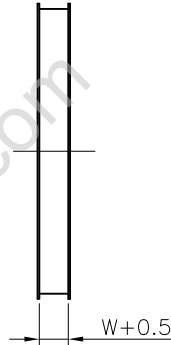
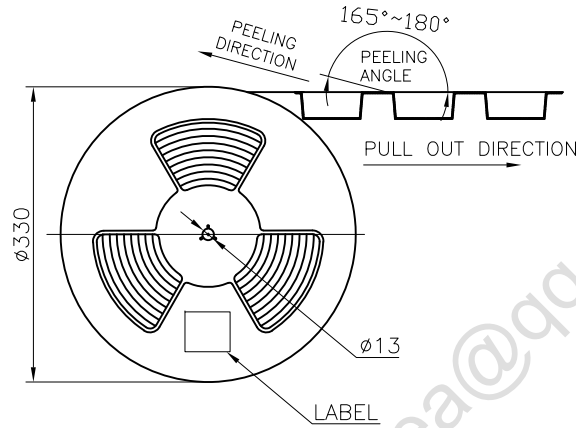
RoHS Compliant

THIS DRAWING CONTAINS INFORMATION THAT IS PROPRIETARY TO WITAREA TECHNOLOGY, AND SHOULD NOT BE USED WITHOUT WRITTEN PERMISSION

| REV | ECN No.    | DATE       | REMARK       |
|-----|------------|------------|--------------|
| E   | ECN1908006 | 2019.08.22 | 增加6.69协会尺寸公差 |
| F   | ECN1912017 | 2019.12.16 | 外壳增加D/C规格    |
| G   | ECN2009002 | 2020.09.08 | 增加PA9T料规格    |



SEE DETAIL X



DETAIL X

|  |               |   |                               |                               |                           |
|--|---------------|---|-------------------------------|-------------------------------|---------------------------|
| <b>PART NO.:</b><br>SEE THE PART NUMBER CODE |               | 深圳市纬域科技有限公司<br>SHENZHEN WITAREA TECHNOLOGY CO.,LTD  |                               | <b>DRAWN BY</b><br>SAM        | <b>DATE</b><br>2020.09.08 |
| <b>GENERAL TOLERANCES (UNLESS SPECIFIED)</b> |               | <b>TITLE</b><br>USB CF 16PIN (L=7.35)WITH POST一体式成型 |                               | <b>CHECKED BY</b><br>JAY      | <b>DATE</b><br>2020.09.08 |
| <b>QUALITY SYMBOL</b>                        | x.xxxx ± ---  | <b>DWG.NO.</b><br>W0026-16-TM1-S1                   | <b>SHEET NO.</b><br>3 OF 3    | <b>APPROVED BY</b><br>JACKY   | <b>DATE</b><br>2020.09.08 |
|  | x.xxx ± 0.10  | <b>DIMENSION STYLE</b><br>MM ONLY                   | <b>DESIGN UNITS</b><br>METRIC | <b>THIRD ANGLE PROJECTION</b> |                           |
|  | x.xx ± 0.25   | <b>SCALE</b><br>1:1                                 |                               |                               |                           |
|  | x.x ± 0.30    |   |                               |                               |                           |
|  | ANGULAR ± --° |   |                               |                               |                           |

|                 | REEL | CARTON |
|-----------------|------|--------|
| CONNECTOR (PCS) | 800  | 8000   |

frame size: A4